



## **CAPABILITY STATEMENT**







# **THE YARD** BRISBANE CAPABILITIES

## Table of Contents

1. Introduction
2. Facility and Services
3. Refit Halls and Project Sheds
4. Service Berth – In water works
5. Sand Blasting Bays and Project Sheds
6. RORO Ramp, Hardstand and Lay down areas
7. Onsite Marine Specialists
8. Private Secure 24hrs Facility
9. QHSE
10. Contractors
10. Project Management
11. Preferred Contractor List
12. Case Studies





## Introduction

The Yard Brisbane (TYB) is one of the most well-resourced shipyards on the east coast of Australia. Strategically located less than 2km from the port of Brisbane, 15km from the Brisbane International Airport and within 11km of the CBD, proximity to trades, accommodation, spare parts, suppliers and contractors make this a great place to bring your vessel for works.

The Yard Brisbane is a full-service shipyard catering to a wide range of refit, ship repair and marine construction activities. Our team of highly skilled professionals are certified to work on all vessels that visit our facility.

The Yard Brisbane was awarded the Commercial Marine Service Provider of the year in 2019 by AIMEX (Australian and International Marine Exporters) and we are working towards full ISO accreditation.



**350+**  
Tradesman & Staff



**600T**  
Lifting Capacity



**90M**  
Project Sheds



**200+**  
Vessels lifted / year



**Commercial Marine  
Service Provider of  
the Year 2019**

# Facilities & Services

Our ‘full-service shipyard’ model starts with specialised infrastructure and a range of in-house services that are the envy of many other shipyards in the region and some of these include:

## Facilities and Infrastructure

- 600T / 300T / 65T Marine Straddle Carriers.
- Multiple High clearance refit sheds from 50 m to 90m in length (90m x 25m x 25m) with air draft between 19m and 24.5 m.
- 50m service berth with up to 125Amp power and fuel bowser.
- Deep water berthing with crane and vehicle access.
- Sealed hardstand with three phase power and essential services for all vessels.
- Neighbouring marina with access to additional 105 berths.
- Fuel facility.
- A full suite of hire equipment available on site – EWP’s, forklifts, Franna cranes, cooling towers, scaffold and more.

## In House and On-Site Services

- Full Refit and Project Management Capabilities.
- Ultra-high pressure water blasting.
- Fitting and machining work on shafts, stern gear, engine room machinery, deck equipment, etc.
- Interior Fit-out teams with comprehensive workshops and CAD/CAM capabilities.
- Full vessel 3D Scanning and design.
- Propellor replacement, repairs and tuning - running gear specialists.
- All hull material repairs including steel, alloy, composite, and timber repairs and refit works.
- Traditional & composite boat builders.
- Abrasive Blasting and Industrial Coatings.
- Vessel painting – Recreational, Commercial and Superyacht.
- Marine Engine Diesel Fitting.
- Marine Electrical.
- Marine Power Generation – design, supply and repair.
- Hydraulics and Pipe Works.
- Shipyard Store and Chandlery Services.
- Machinery and equipment hire.





## Refit Halls and Project Sheds

Our purpose-built refit halls, repair/project sheds are up to 90m long and with air draft up to 25m (under gantry cranes). Three of our refit halls feature overhead gantry cranes, whilst all sheds have multiple high amp power outlets up to 125 Amps, high tech fire monitoring system, ventilation, lighting, controlled access, private storage areas and amenities.

## Service Berth – In Water Works

We have a 50m service berth adjacent to our lifting bay which may be booked for in water works or commissioning of vessels. The service berth features up to 125Amps of power, water, 4m draft at LAT as well as crane access. Plans are currently underway to develop additional in water works capacity consisting of 3 additional 100m berths with dredging to -6.5 LAT.

## Sandblasting Bays and Project Sheds

Abrasive Blasting is a key component of our service offering. Our infrastructure includes two 50m blast bays and multiple blasting sheds.

Our exclusive on-site sandblasting tenant, GT Mac Industries, holds the relevant environmental permits and has extensive training and experience to provide professional, safe and responsible outcomes for both the shipyard and our customers.

TYB is in the process of converting a 70m 'Refit Hall' to a blasting shed for large scale abraasive blasting projects such as Harbour Tugs, Superyachts and Defence vessels.



## **RORO ramp, specialised hardstand, lay down areas for marine construction and logistics**

A growing segment in our customer base includes Marine Construction and Logistical assembly and loading out. We have a designated hardstand abutting our Roll On Roll Off Ramp which is suitable for all kinds of marine construction and logistics projects.

Some examples of these include;

- Construction and load out of Pile Caps for Centenary Bridge, Indooroopilly. Joint Venture project by Georgiou and BMD. Involved 30 load outs onto a barge for transport up the Brisbane River to the work site.
- Assembly of Caterpillar Mining trucks for loading onto LCT for transport to Weipa. Joint venture project with Fodico Marine and MTK Heavy Equipment Maintenance.
- Construction and load out of Cantilever Frames for Kingsford Smith Drive Project. Joint project with Harrap Marine Industries and Lend Lease.

## **Private Secure 24h Facility**

The Yard Brisbane is a secured 7-hectare marine park that allows card access only. The site has manned security/concierge services for 10 hours a day with regular after-hours security patrols. Coupled with security cameras positioned strategically throughout the site and inside sheds we pride ourselves on our commitment to securing and protecting customer assets. Our private facility with 24-hour access remains unrivalled through our ability to accommodate emergency, surveys, repairs, refits, engineering, construction, and turnkey solutions to this essential sector of the marine market.



# QHSE – Quality Health Safety Environment and logistics

The Yard Brisbane has implemented a QHSE management system in accordance with ISO standards 9001, 14001 and 45001. The basic framework for our system is outlined below and guides all departments and activities in our business and facility. The CEO reviews and communicates a clear and concise QHSE policy, establishing the foundation of the QHSE management system.

Quality, Health, Safety and Environmental outcomes are documented in the business QHSE Objectives. These objectives are discussed during management meetings and monitored throughout the financial year. These objectives ensure we comply with best practice work methods while continually improving our QHSE system.

## QHSE Team

As the business has grown rapidly over recent years, the QHSE team has also expanded. To maintain compliance, the QHSE team works to improve our systems, manage risks and complete consultation. The team is led by a QHSE officer and includes a QHSE yard hand and security officer.

The Framework for our QHSE system is outlined below:



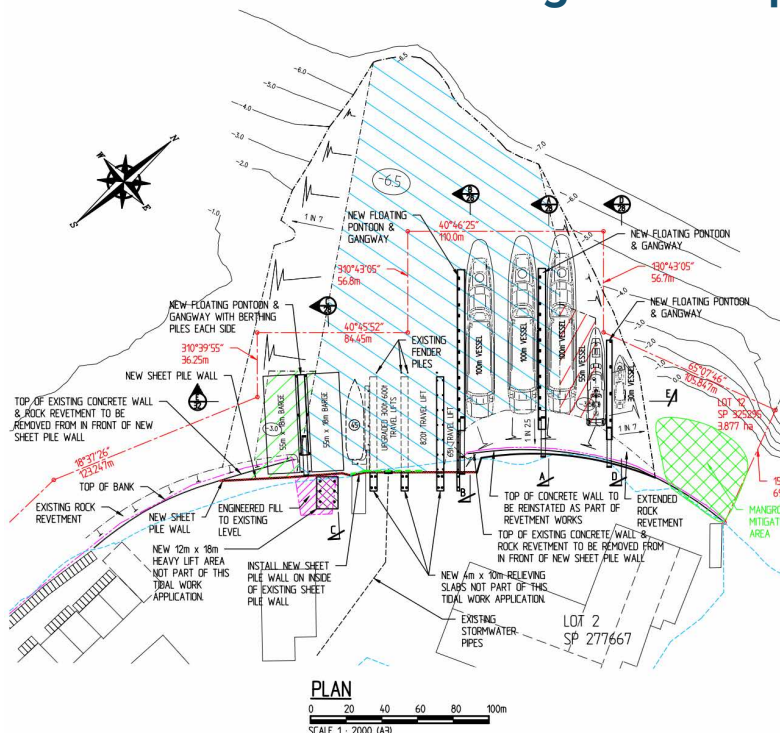
## 10. Project Management

Another key element of our ‘full-service shipyard’ offering is our Project Management service. Project management is often requested when a customer recognises the need for additional skills to supplement their program of works, or where we see a need to assist the customer with their program to reduce costs and deliver exceptional QHSE outcomes. Our experienced Project Management team are adaptable to our diverse vessel segments and customers. We strive to achieve an efficient docking and shipyard experience.

## 11. Strategic Plan

The Yard Brisbane recognises the increasing role our maritime industry has to play on our east coast in the coming years. We have recently gained approval for future development of the shipyard. This approval includes the following improvements to our facility:

### THE YARD BRISBANE Strategic Development Plan



- In water berthing for large vessels – 3 x 100m service berths plus 1 x 30m service berth.
- Additional 820T Straddle Carrier and associated fingers and sea wall.
- Dedicated barge berth with engineered hardstand for heavy lift crane loading and unloading
- Dedicated blasting sheds – enclosed, pressurised, filtered air extraction





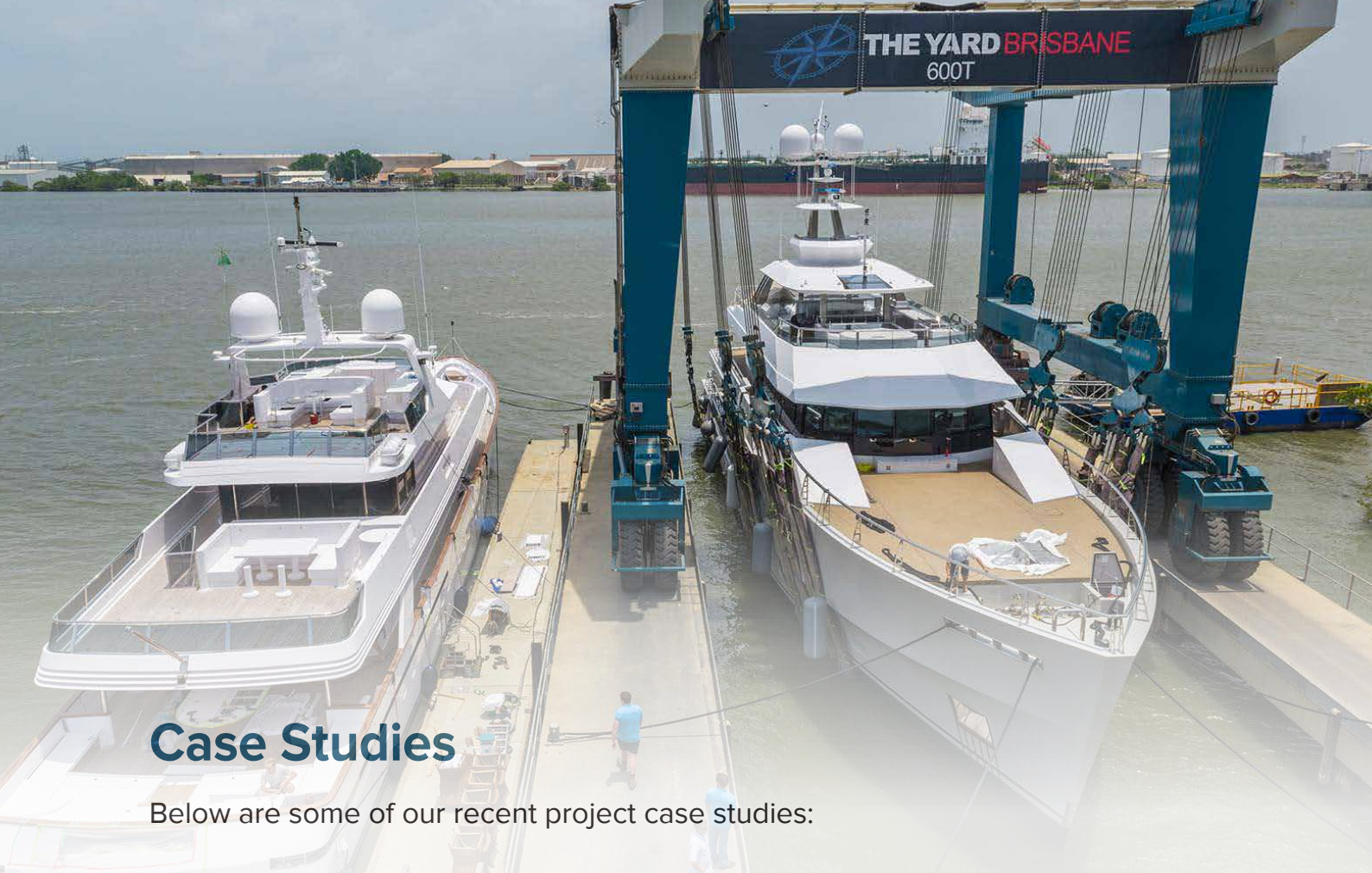
## 12. Preferred Contractor List

We count on our ‘Preferred Contractors’ for specialist marine services for our customers. The preferred contractors must satisfy some key criteria before they are referred to our customers. Some of these criteria are outlined below:

- ESSENTIAL SERVICE TO THE YARD BRISBANE
- SPECIALIST SERVICE PROVIDER
- REQUIREMENT FOR CONSISTENT SERVICE DELIVERY
- HIGH QUALITY OF SERVICE
- LONG TERM RELATIONSHIP WITH TYB
- COMPLIANCE WITH TYB QHSE PROCESS
- POTENTIAL ONSITE TENANT
- QHSE INCIDENT PERFORMANCE/HISTORY
- INVOICING (Timeliness and accuracy)
- RESPONSIVENESS TO SPECIAL REQUESTS
- CUSTOMER SATISFACTION

For a list of our Preferred Contractors please contact us.





## Case Studies

Below are some of our recent project case studies:

### **T7 – 15m Royal Australian Navy Landing Craft**

- Customer is Teekay.
- Full interior and exterior refit over 12 weeks.
- Scope includes cropping hull plate and replacing frames.
- Engine change out including stern drive replacement
- Electrical upgrades and compliance
- Paint topsides and now HBWL paint system.

### **Adix – 68m Sailing Yacht**

- Full interior and exterior refit over 6mths in refit Hall 3
- Scope includes Engineering, Paint, Additional lead to keel, Mast refurbishment and more.

### **Keri Lee III – 55m Superyacht**

- Full interior and exterior refit over 12mths in Refit Hall 2.
- Main Engines, Generators, Class ABS 5 year survey, full exterior repaint, full interior refit and paint.

### **Engage Marine – 15 months**

- 7 dockings – Engage Crusader, Engage Bandit, SL Diamantina, SL Fitzroy, SL Indie, SL Marinique & SL Pardoo
- Full project management
- Dockings took place in our Blast Bays and Refit Halls during 2023 and 2024.



## Engage Marine Customer Testimonial

To whom it may Concern

I am writing to provide a reference for The Yard Brisbane based on our recent collaboration in 2023. Our company engaged The Yard for the docking and maintenance of seven of our harbour tugboats, and I am pleased to express our satisfaction with the quality of work and professionalism demonstrated by The Yard throughout each project from the quoting through the entire process and return to service of each vessel.

The Yard's handling of each project highlighted their expertise in managing large-scale initiatives, demonstrating an understanding of the intricacies associated with such endeavours. Their approach to the docking process was professional and efficient, working alongside our company representative to get the highest possible outcome within the time and budgetary constraints provided, whilst managing the needs of their other clients on site.

I was pleased by The Yard's project management, administration, and project tracking. Their attention to detail and coordination were instrumental in the execution of each project.

Effective communication and commitment to critical timelines were notable aspects of their project management capabilities.

Additionally, I would like to acknowledge The Yard's management of contractors, and good relationships with an array of high-quality trades. Their ability to coordinate and oversee various contributors to the project further emphasized their proficiency in handling multifaceted aspects of large commercial ventures.

In the realm of Quality, Health, Safety, and Environmental (QHSE) management, The Yard's commitment to industry standards was evident. Their adherence to safety protocols contributed to a secure working environment, reflecting their dedication to the well-being of personnel and environment.

In conclusion, I am pleased to extend my recommendation for The Yard Brisbane and am looking forward to working with them on future projects.

Kind regards

Everett James

Superintendent – Engage Marine



## Contact us

p. +61 7 3348 5600

[www.theyardbrisbane.com](http://www.theyardbrisbane.com)

